



Independent Living

At Generations, you can live a life carefree, without all the responsibilities of homeownership, and enjoy all of the activities, services, outings, and amenities we have to offer. Cherrywood Village offers an exceptional independent living experience that celebrates active lifestyles in every way.

Your Carefree Life Awaits

Without time-consuming and expensive home maintenance and repairs to fuss over, Independent Living at Cherrywood Village is a breath of fresh air—all at a great value. We offer a wide variety of living options including apartments, duplexes, fourplexes and penthouses. Cottages appointed with a washer & dryer, full kitchen, patio, and garage. Affordable monthly rental rates provide an exceptional value.



Amenities & Services

- Cable
- Housekeeping
- Linen Service
- Scheduled Transportation
- Concierge or Front Desk Services
- Church Services
- Vitality Calendar
- 24-Hour Security
- Special Dietary Menus
- Emergency Call System
- Emergency Pendant
- Flexible Meal Plan
- State Of The Art Gym
- Exercise Room/ Fitness Area
- Salon
- Art Studio
- Library
- Gardening Area
- Game Room /Area
- Private Dining Room
- Covered Parking
- Chapel
- Cafe or Bistro
- Community Kitchen
- Ping Pong, Pool Table, Shuffle Board
- Ice Cream Parlor
- Balcony or Patio Apartments
- Full kitchen
- Laundry Room In Apartment
- Pool
- Hot Tub
- Movie Theater
- Workshop



Independent Living

Cottage Living (per month)

Two Bedroom Duplex

STARTING AT
\$5,900

Four-Plex

STARTING AT
\$5,400

The Orchards (per month)

Studios

STARTING AT
\$3,500

Alcove Studio

STARTING AT
\$3,700

One Bedroom

STARTING AT
\$4,600

Deluxe One Bedroom

STARTING AT
\$5,300

Two Bedroom

STARTING AT
\$5,600

The Gardens (per month)

One Bedroom

STARTING AT
\$4,450

Two Bedroom

STARTING AT
\$5,300

The Greens & Wynridge (per month)

One Bedroom

STARTING AT
\$4,200

Two Bedroom

STARTING AT
\$5,100

Penthouse Living (per month)

1380 Sq. Ft.

STARTING AT
\$6,700

1505 Sq. Ft.

STARTING AT
\$7,100

1530 Sq. Ft.

STARTING AT
\$7,700

1988 Sq. Ft.

STARTING AT
\$8,750

2143 Sq. Ft.

STARTING AT
\$9,500

Double Occupancy Fee

\$1,000
per month



*Please refer to the Ancillary Charge Sheet for any additional fees and/or charges.



Independent Living

Independent Apartment Living Fees and Deposits

Waitlist/Community Fee **\$3,000**

Penthouse Waitlist/Community Fee **\$5,000**

Pet Fee

*Acceptance of pets is at the Executive Director's discretion. This is a one-time fee and is non-refundable. Pet must be current on all vaccinations.

\$1,000*

Emergency Pendant Fee

\$200

ONE-TIME

Garage Parking Fee

\$75

PER MONTH

Secured Carport Parking Fee

\$60

Comcast fees for TV box/modem
(approx.)

No Fee

*Additional TV package upgrades, phone and Internet fees determined by Comcast

Additional Housekeeping Fees

\$30

PER HOUR

Additional Maintenance Fees

\$45

PER HOUR

Room Service Delivery Fee

\$5

To-Go Packaging Fee

\$2

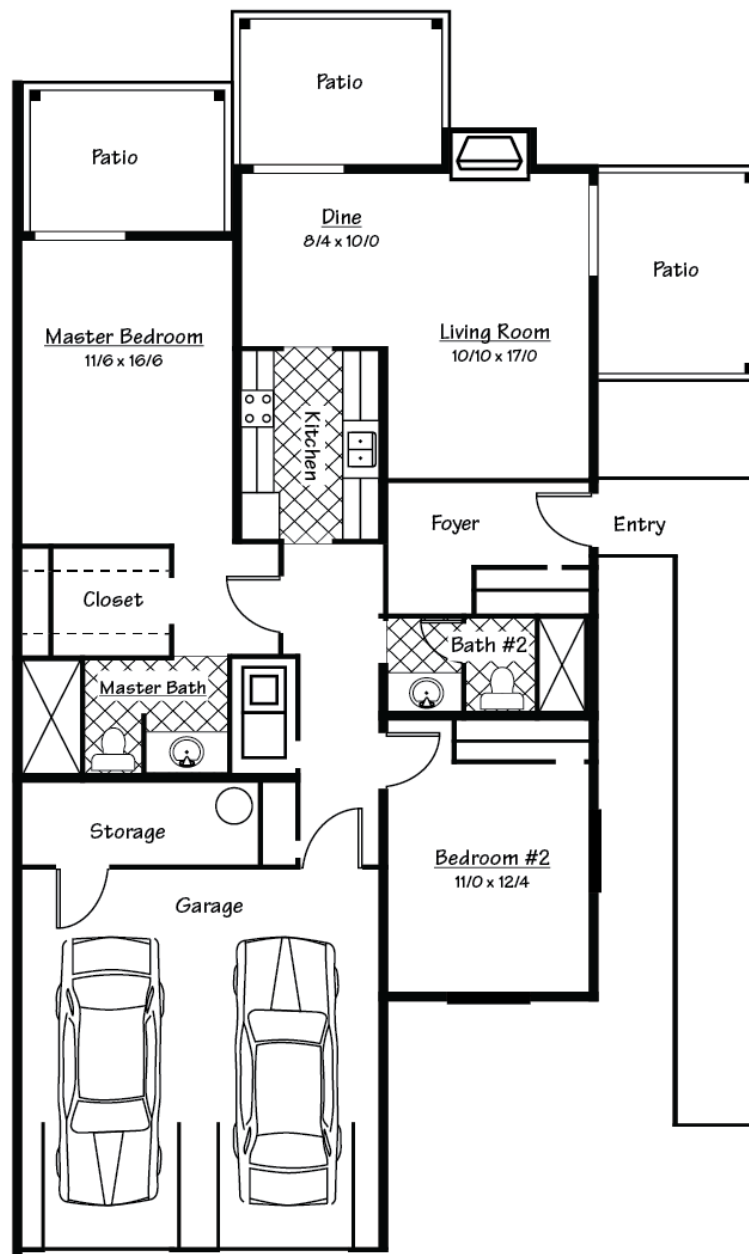
Meal Credits are per person and have no cash value





Independent Living Floor Plans-Cottage Living

Duplex • 2 Bedroom • 2 Bath • Approx. 1,290 Sq. Ft.



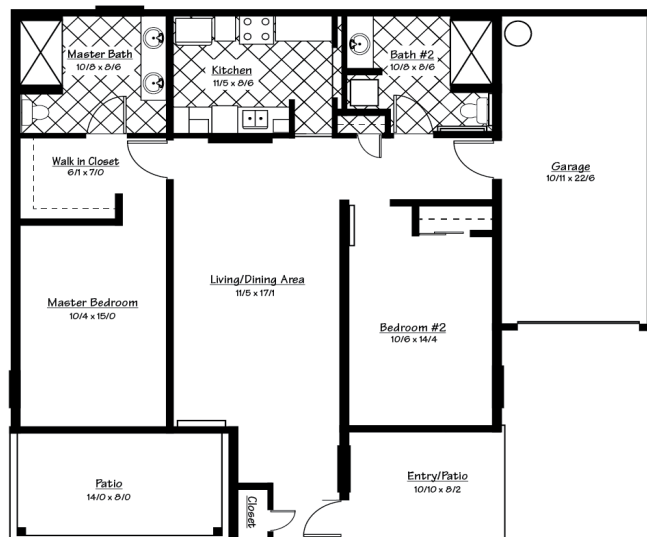


Independent Living Floor Plans

Four-Plex Upper • 2 Bedroom • 2 Bath • Approx. 1,184 Sq. Ft.



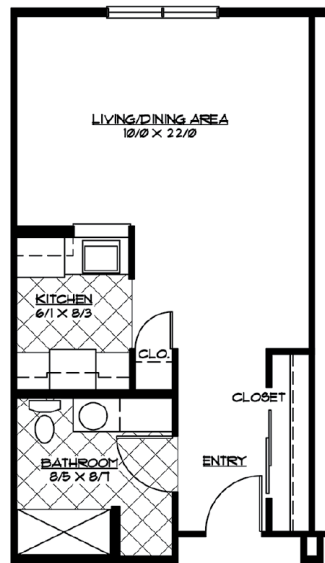
Four-Plex Lower • 2 Bedroom • 2 Bath • Approx. 1,184 Sq. Ft.



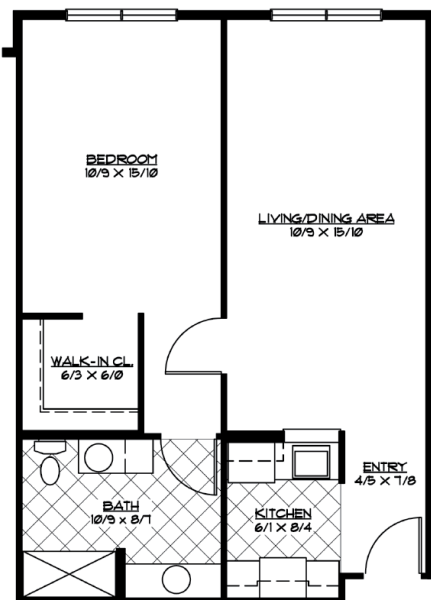


Independent Living Floor Plans-The Orchards

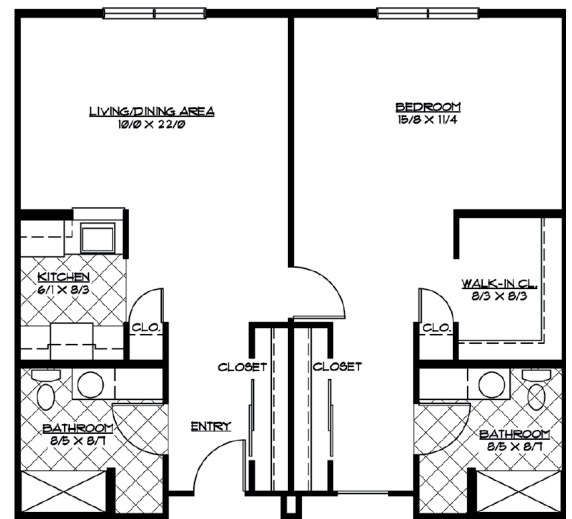
Studio • Approx. 479 Sq. Ft.



One Bedroom • Approx. 682 Sq. Ft.



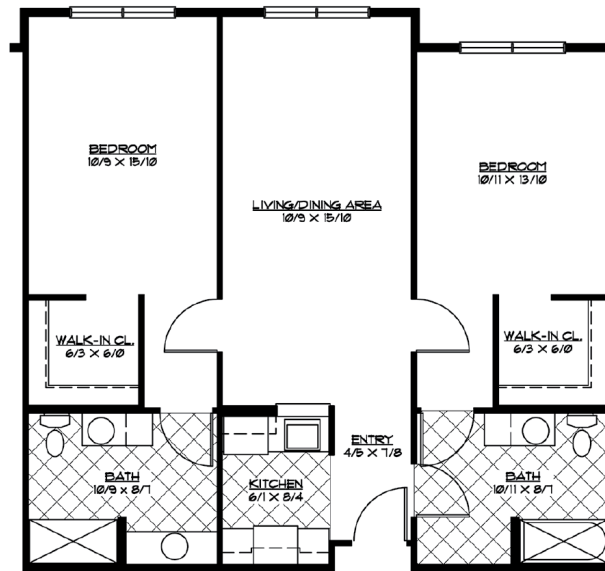
One Bedroom • Approx. 960 Sq. Ft.



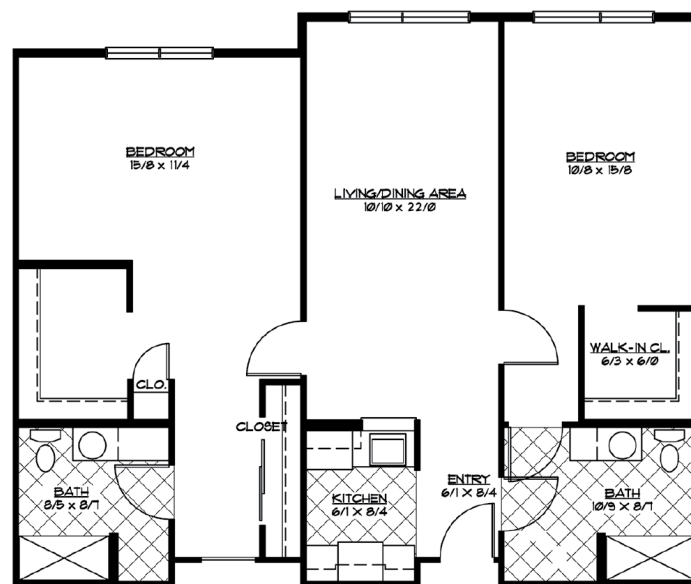


Independent Living Floor Plans

Two Bedroom • Approx. 1,042 Sq. Ft.



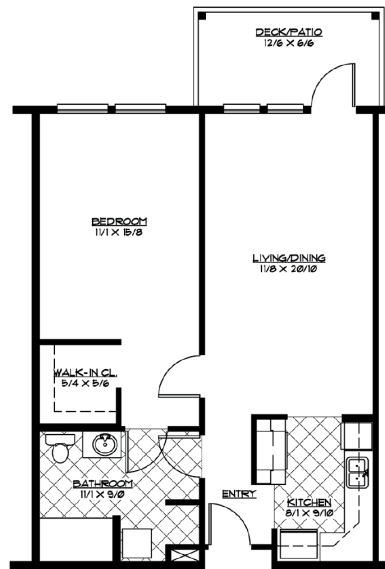
Deluxe Two Bedroom • Approx. 1,260 Sq. Ft.



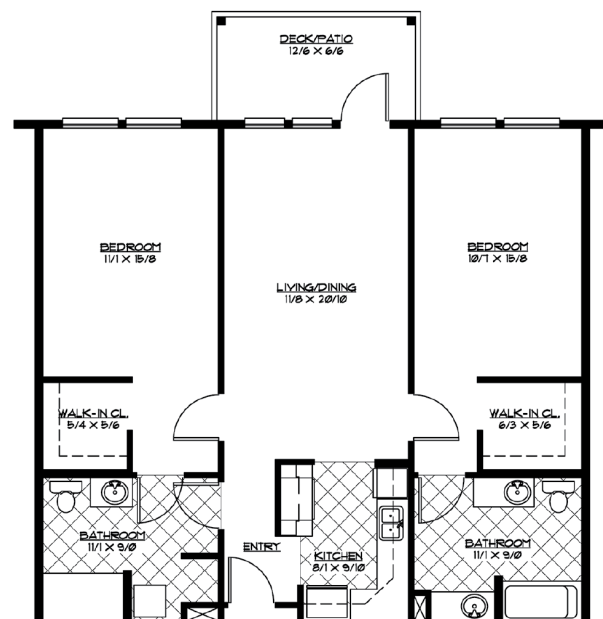


Independent Living Floor Plans-The Gardens

One Bedroom • Approx. 768 Sq. Ft.



Two Bedroom • Approx. 1,088 Sq. Ft.

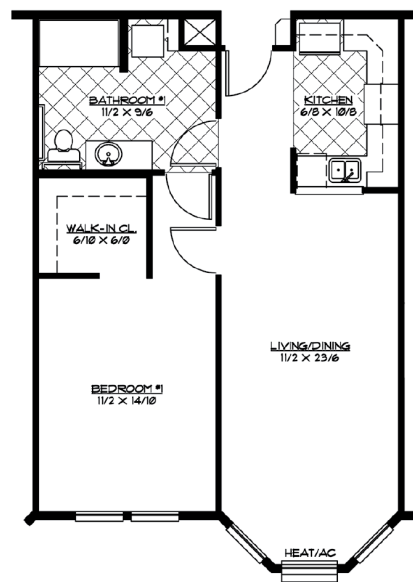




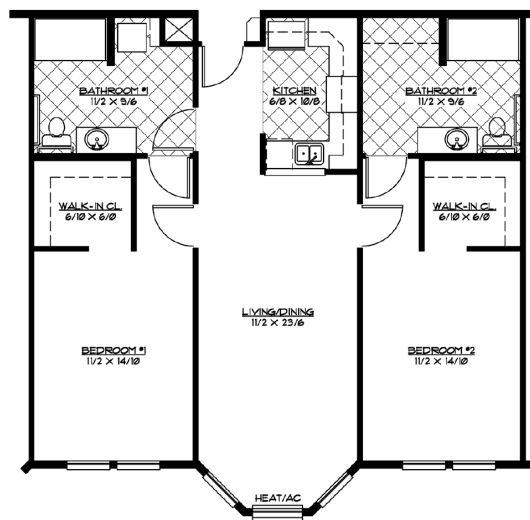
Independent Living Floor Plans

The Greens & Wynridge

One Bedroom • Approx. 766 Sq. Ft.



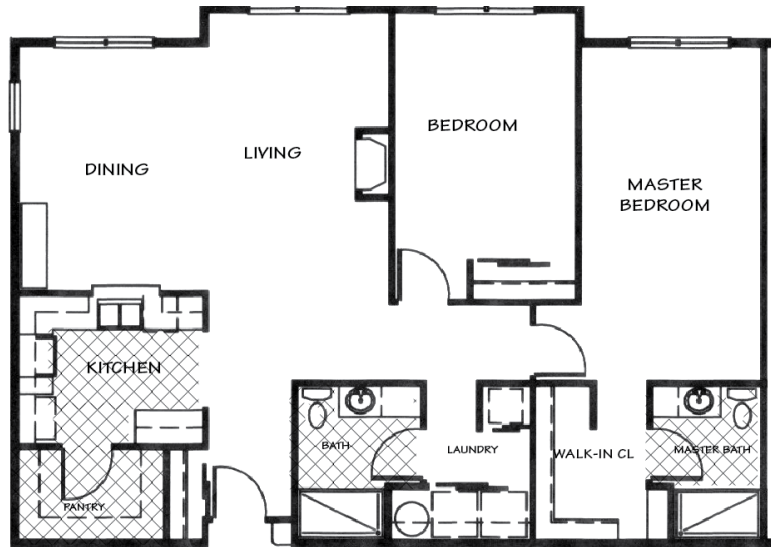
Two Bedroom • Approx. 1,134 Sq. Ft.



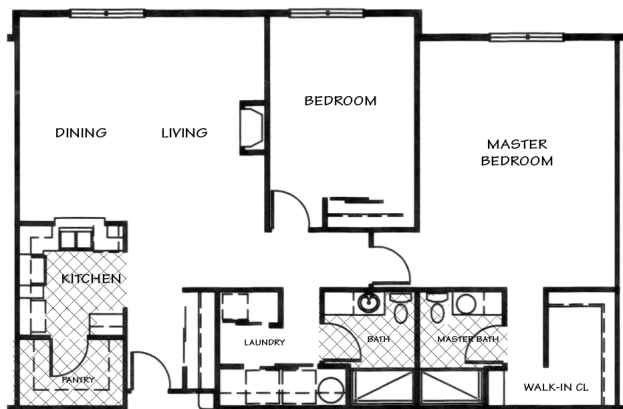


Independent Living Floor Plans

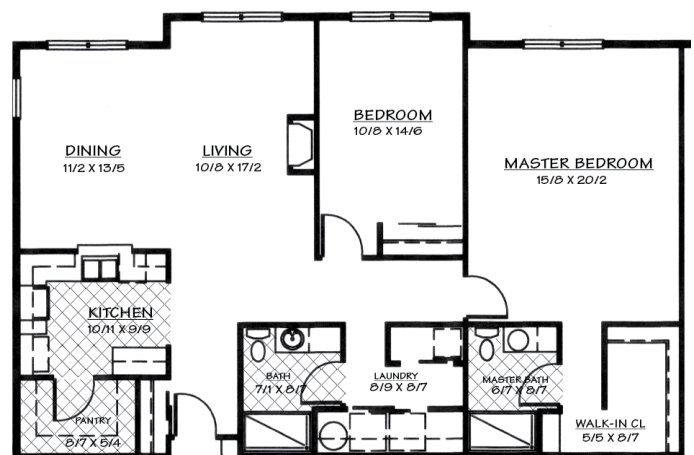
Penthouse • Approx. 1,380 Sq. Ft.



Penthouse • Approx. 1,505 Sq. Ft.



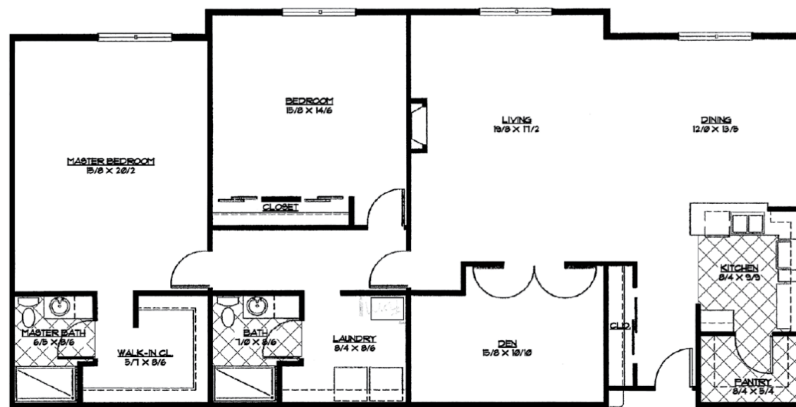
Penthouse • Approx. 1,530 Sq. Ft.



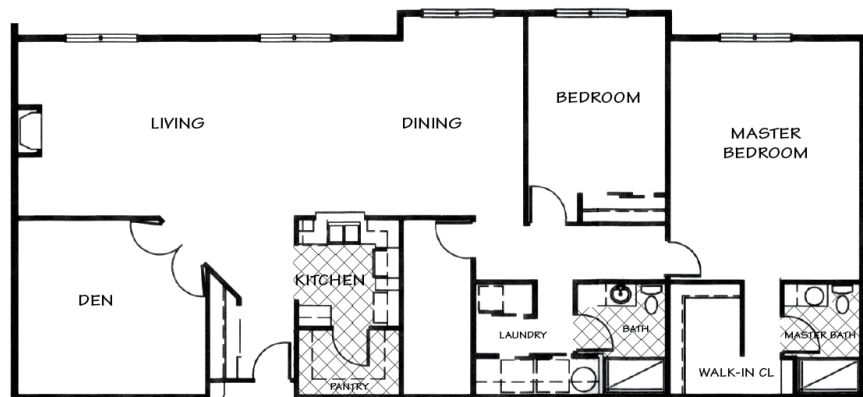


Independent Living Floor Plans

Penthouse • Approx. 1,988 Sq. Ft.



Penthouse • Approx. 2,143 Sq. Ft.





Assisted Living

Being able to depend upon someone is important for peace-of-mind. Cherrywood Village Assisted Living has a stylish selection of residences with 24-hour caregiving assistance available. Relax, you're home.

Daily Independence. Help When You Need It.

Put your daily living and healthcare concerns in the past with an apartment home at Cherrywood Village. Warm and inviting, our Assisted Living provides personal care services and programs designed to meet individual needs. Choose from a variety of floor plans, from studios to 2-bedroom apartments. Affordable monthly rental rates provide an exceptional value.



Amenities & Services

Enjoy your independent lifestyle with personal care when you need it. We'll take care of the housekeeping, laundry, meals, maintenance, and so much more.

- Cable
- Housekeeping
- Linen Service
- Laundry Service
- Scheduled Transportation
- Concierge or Front Desk Services
- Vitality Calendar
- 24-Hour Security
- Special Dietary Menus
- Nurse on staff
- Emergency call system
- Emergency Pendant
- 3 meals /day +snacks
- State of the art Gym
- Exercise Room/ Fitness Area
- Salon
- Art Studio
- Library
- Gardening Area
- Game Room /Area
- Private Dining Room
- Covered Parking
- Chapel
- Cafe or Bistro
- Kitchenette
- Pool
- Hot Tub
- Movie Theater



Assisted Living

Assisted Living (per month)

Studios	STARTING AT \$5,100
One Bedroom	STARTING AT \$6,000
Deluxe One Bedroom	STARTING AT \$6,500
Two Bedroom	STARTING AT \$7,100
Double Occupancy Fee	\$1,000 per month

Levels of Care (per month)

Level 1	\$750
Level 2	\$1,350
Level 3	\$1,850
Level 4	\$2,300
Level 5	\$2,800
Level 6	\$3,200
Level 7	\$3,600

Waitlist/Community Fee **\$3,000**

Pet Fee **\$1,000***

*Acceptance of pets is at the Executive Director's discretion. This is a one-time fee and is non-refundable. Pet must be current on all vaccinations.

Emergency Pendant Fee **\$200**
ONE-TIME

Room Service Delivery **\$3**
PER DELIVERY

Comcast fees for TV box/modem (approx.) **No Fee**

*Additional TV package upgrades, phone and Internet fees determined by Comcast

Additional Housekeeping Fees **\$30**
PER HOUR

Additional Maintenance Fees **\$45**
PER HOUR

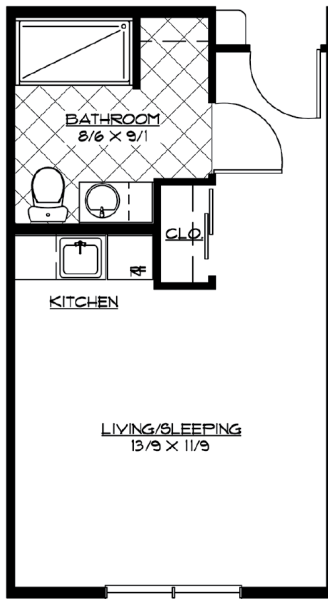
Resident prompted move to higher level of care **\$1,000**
FLAT FEE



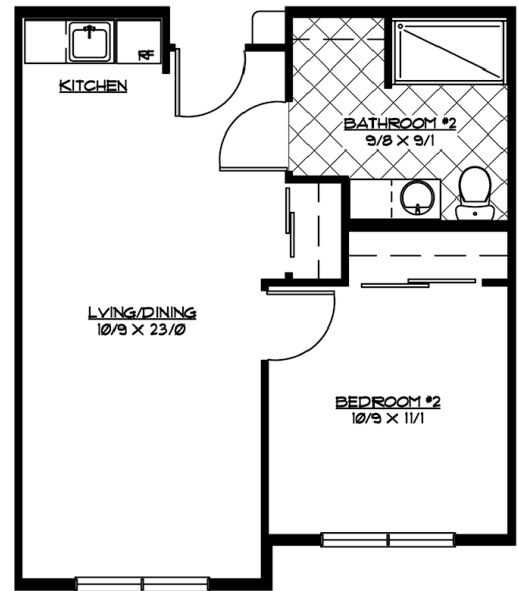


Assisted Living Floor Plans

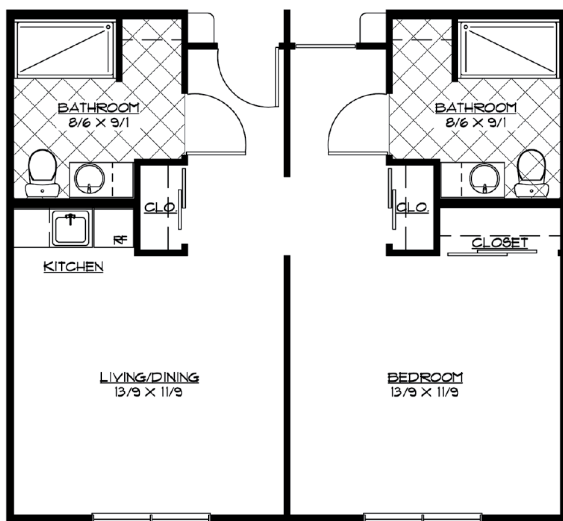
Studio • Approx. 348 Sq. Ft.



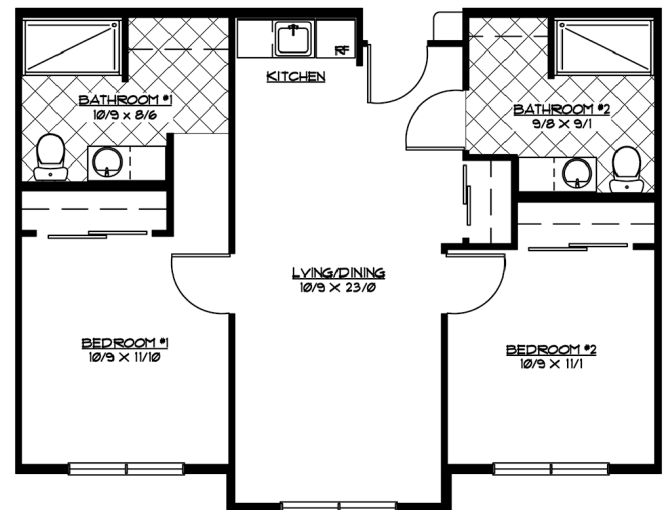
One Bedroom • Approx. 550 Sq. Ft.



Deluxe One Bedroom • Approx. 768 Sq. Ft.



Two Bedroom • Approx. 814 Sq. Ft.





Memory Care

Designed to be a safe, compassionate space that supports free choice and encourages individuality, our Memory Care offers a comprehensive array of services including bathing, dressing, meals, medication assistance, personal escorts, safety checks, social activities, and more.

A Heartfelt & Holistic Approach

Experience our person-centered approach to memory care—designed to provide special care, comfort, and safety to our residents living with dementia, Alzheimer's, or other memory issues.

At Cherrywood Village, our highly trained professionals will work closely with you and your family to create an individual program that honors your loved one today, and as their emotional and practical needs change.



Amenities & Services

- Cable
- Linen Service
- Laundry Service
- Scheduled Transportation
- Vitality Calendar
- 24-Hour Security
- Special Dietary Menus
- Emergency call system
- 3 meals /day +snacks
- Chapel
- In-house chef and culinary program
- Daily weekday housekeeping and spot cleaning on weekends
- Scenic drives and monthly family events
- Memory care tailored activities 7 days a week
- Access to community amenities (chapel, movie theater, salon, protected outdoor courtyards with greenhouse)
- Occasional assistance with moving about
- Cueing for activities and meals
- Reminders regarding personal hygiene
- Standby assistance with dressing, grooming and bathing 2x a week



Memory Care

Care Centered Accommodations (per month)

Private Studio/Shared Bath **STARTING AT \$7,500**

Private Studio **STARTING AT \$8,200**

Levels of Care (per month)

Level 1 **\$250**

Level 2 **\$500**

Level 3 **\$750**

Level 4 **\$850**

Level 5 **\$1,000**

Level 6 **\$1,200**

Level 7 **\$1,400**

Hospice Care and Respite Stay

Compassionate care in a home-like environment is available based on individual needs. Inquire with your retirement counselor.

Inquire within

Waitlist/Community Fee

\$3,000

Resident prompted moves to higher level of care

No Fee

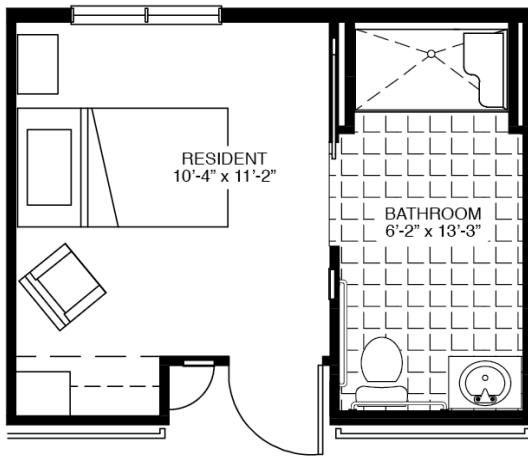


*Please refer to the Ancillary Charge Sheet for any additional fees and/or charges.



Memory Care Floor Plans

Private Studio • Approx. 196 Sq. Ft.



Private Studio, Shared Bath • Approx. 116 Sq. Ft.

